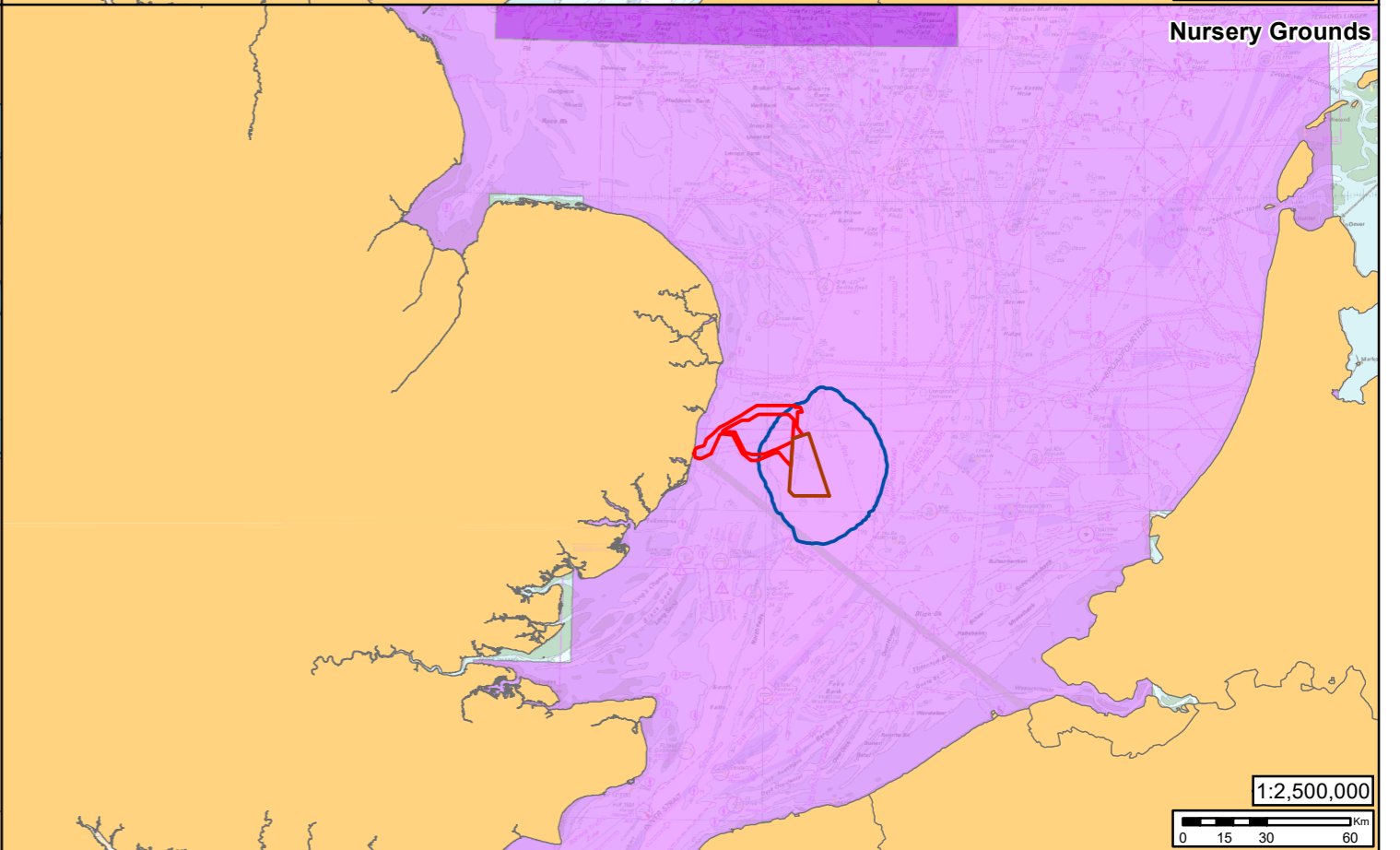
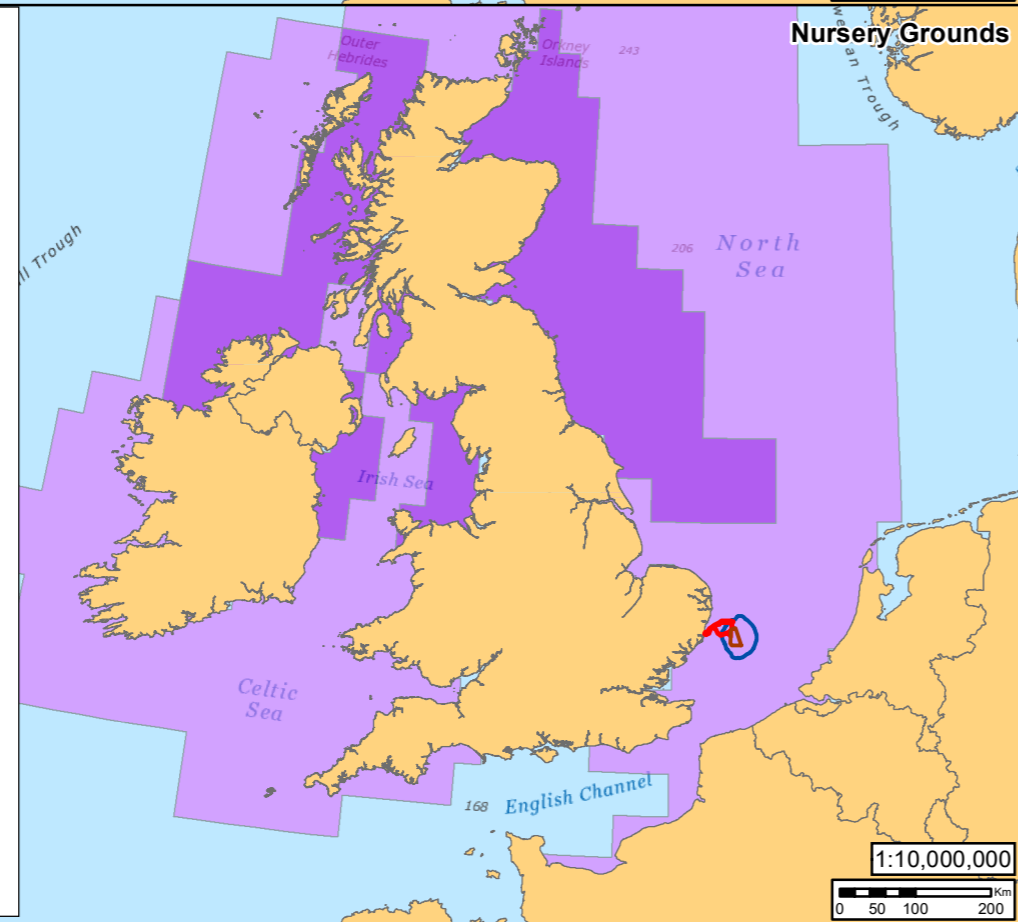


- Legend**
- East Anglia TWO Windfarm Site
 - East Anglia TWO Offshore Cable Corridor
- Whiting Spawning Grounds**
- Coull et al. 1998**
- Whiting
- Ellis et al. 2010**
- High Intensity
 - Low Intensity
- Whiting Nursery Grounds**
- Coull et al. 1998**
- Whiting
- Ellis et al. 2010**
- High Intensity
 - Low Intensity
- TTS (186dB Contour) Pin Pile Noise Impact Contour (Fleeing Model)



Rev	Date	By	Comment	Approved:
2	24/06/2019	FC	Second Issue.	Prepared: FC
1	21/05/2019	FC	First Issue.	Checked: KC

Scale @ A3

Source: © Subacoustech, 2018. © Cefas, 2018. Contains OS data © Crown copyright and database rights, 2019. © British Crown and OceanWise, 2019. All rights reserved. Licence No. EMS-EK001-548150. Not to be used for navigation. Service Layer Credits: Sources: Esri, GEBCO, NOAA, National Geographic, Garmin, HERE, Geonames.org, and other contributors.

This map has been produced to the latest known information at the time of issue, and has been produced for your information only. Please consult with the SPR Offshore GIS team to ensure the content is still current before using the information contained on this map. To the fullest extent permitted by law, we accept no responsibility or liability (whether in contract, tort (including negligence) or otherwise in respect of any errors or omissions in the information contained in the map and shall not be liable for any loss, damage or expense caused by such errors or omissions.

East Anglia TWO

Whiting Spawning and Nursery Grounds in Relation to Worst Case Noise Impact Contour (Fleeing Model)

Drg No	EA2-DEV-DRG-IBR-000652	
Rev	2	Datum: WGS 1984
Date	24/06/19	Projection: Zone 31N
Figure	10.37	